

369

GRAND

— BY ONNI —

SWC OF GRAND + ORLEANS
±2,752 SF OF INLINE RETAIL

onni
group

CBRE

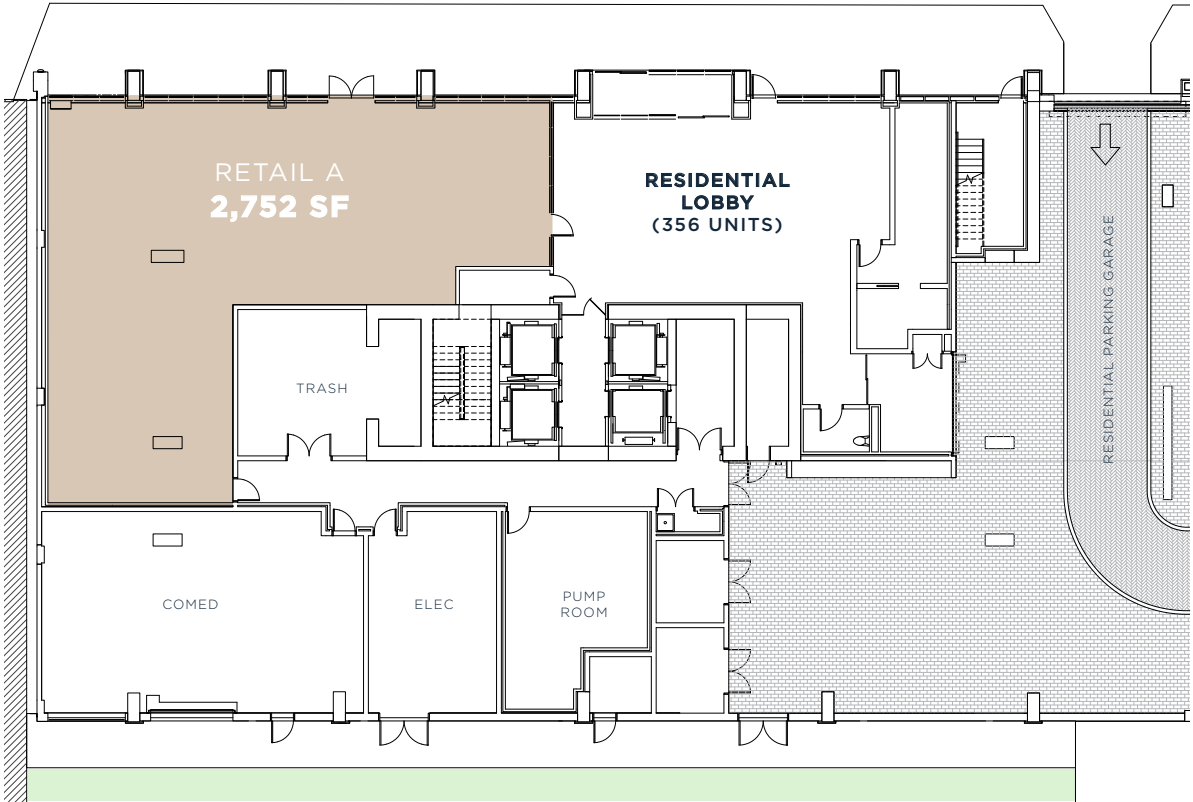
2,752 SF
TOTAL AVAILABLE

RETAIL WEST SITE PLAN

W. GRAND AVENUE 17,100 VPD

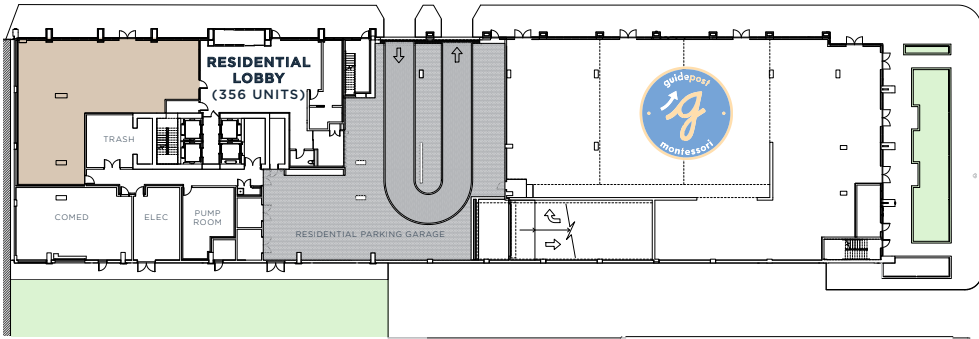
RETAIL FEATURES:

- CEILING HEIGHTS RANGE:
13'-8" – 14'-8"
- BLACK IRON CAPABILITY



OVERALL SITE PLAN

W. GRAND AVENUE 17,100 VPD



N. ORLEANS STREET 21,400 VPD



AREA

DEMOGRAPHICS



Employees
499,036



Avg HH Income
\$145,110



Daytime
Population
564,335



Consumer
Expenditure:
Apparel +
Services
\$228.6 M



Consumer
Expenditure:
Dining Out
\$392.2 M

WITHIN 1 MILE - 2019



SPACE/MARKET

HIGHLIGHTS

Small shop retail space
available at the base of a
luxury 356 unit building

Located in the dense
and rapidly expanding
western portion of
River North

The site benefits from the
extremely high volume of
vehicular traffic passing
the site due to the close
proximity to the I-90/I-94
feeder ramps

Available immediately

Excellent branding and
signage opportunities

Ideal opportunity for a
variety of users including
fitness, restaurant,
service and medical

369
GRAND
— BY ONNI —

369

GRAND

— BY ONNI —

SWC OF GRAND + ORLEANS

For more information, please contact:

Danny Jacobson

+1 312 935 1901

Danny.Jacobson@cbre.com

Stephen Ansani

+1 312 935 1907

Stephen.Ansani@cbre.com



© 2022 CBRE, Inc. All rights reserved. This information has been obtained from sources believed reliable, but has not been verified for accuracy or completeness. You should conduct a careful, independent investigation of the property and verify all information. Any reliance on this information is solely at your own risk. CBRE and the CBRE logo are service marks of CBRE, Inc. All other marks displayed on this document are the property of their respective owners, and the use of such logos does not imply any affiliation with or endorsement of CBRE. Photos herein are the property of their respective owners. Use of these images without the express written consent of the owner is prohibited.