

AWARD-WINNING CLASS A
RETAIL SPACE FOR LEASE

611 BRAND

611 North Brand Blvd
Glendale, California



onni
group



Kidder
Mathews

611
BRAND

611 NORTH BRAND BLVD
GLENDALE, CALIFORNIA 91203

PROPERTY HIGHLIGHTS

94

WALK
SCORE

24/7

BUILDING
ACCESS



Owned and managed by
Onni Group



Convenient access to the 134,
5, and 2 freeways



Recently completed tenant
amenity lounge and fitness center



Close proximity to Hollywood
Burbank Airport



Located in the bustling
Downtown Glendale district



On-site management with
24/7 security

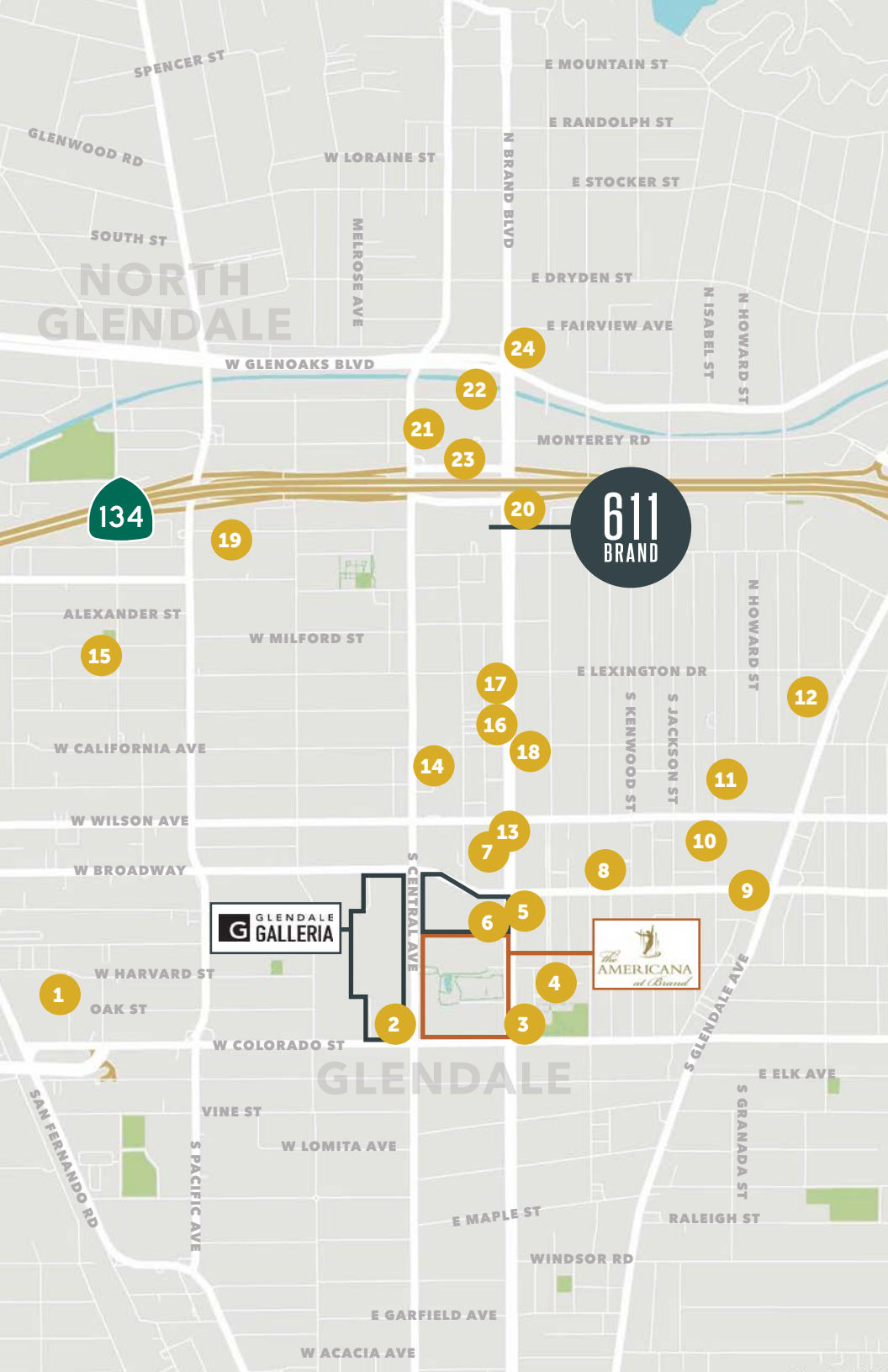


Central to numerous restaurants
and retail amenities within
Downtown Glendale, Glendale
Galleria, Americana at Brand,
and various mixed-use retail and
entertainment developments



Parking ratio of 3.00/1,000
RSF leased at:
\$105.00 per unreserved stall/mo.
\$145.00 per reserved stall/mo.





THE LOCATION

CENTRAL TO NUMEROUS RESTAURANTS AND RETAIL IN DOWNTOWN GLENDALE, 611 BRAND IS PERFECTLY SITUATED FOR AN AMENITY-RICH EXPERIENCE.

- | | | | |
|----|----------------------------|----|---|
| 1 | The Home Depot | 14 | Sears |
| 2 | Target | 15 | 24 Hour Fitness Active |
| 3 | Shake Shack | 16 | Porto's Bakery |
| 4 | Glendale Central Library | 17 | Bank Of America Financial Center |
| 5 | Glendale Marketplace | 18 | 24 Hour Fitness |
| 6 | In-N-Out Burger | 19 | Days Inn Glendale |
| 7 | California Pizza Kitchen | 20 | Chase Bank |
| 8 | US Post Office | 21 | Embassy Suites |
| 9 | Glendale Courthouse | 22 | Hilton Los Angeles North/ Glendale & Executive Meeting Center |
| 10 | Glendale Police Department | 23 | Equinox |
| 11 | Glendale Fashion Center | 24 | Trader Joe's |
| 12 | Whole Foods | | |
| 13 | Tender Greens | | |

611
BRAND

611 NORTH BRAND BLVD
GLENDALE, CALIFORNIA 91203

AVAILABLE SUITES

SUITE	RSF	RATE	FEATURES
Lower Level A	11,515	\$2.50/RSF per month FSG	Retail space available immediately.
Lower Level B	20,626	\$2.50/RSF per month FSG	Retail space available immediately.

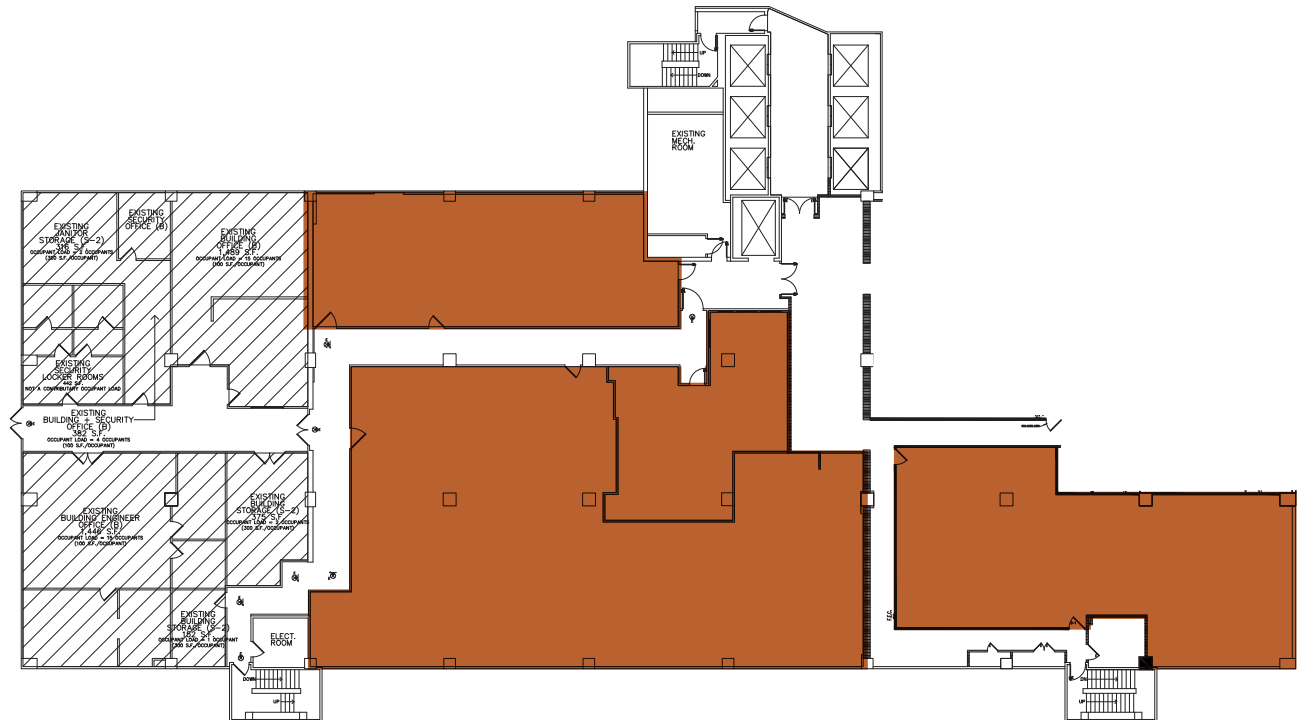


LOWER LEVEL A

11,515
SQUARE
FEET

\$2.50
RSF/MO
FSG

IDEAL FOR OFFICES USERS, LAB USERS AND STORAGE. AVAILABLE IMMEDIATELY.



611 BRAND

**611 NORTH BRAND BLVD
GLENDALE, CALIFORNIA 91203**



Kidder Mathews

611
BRAND

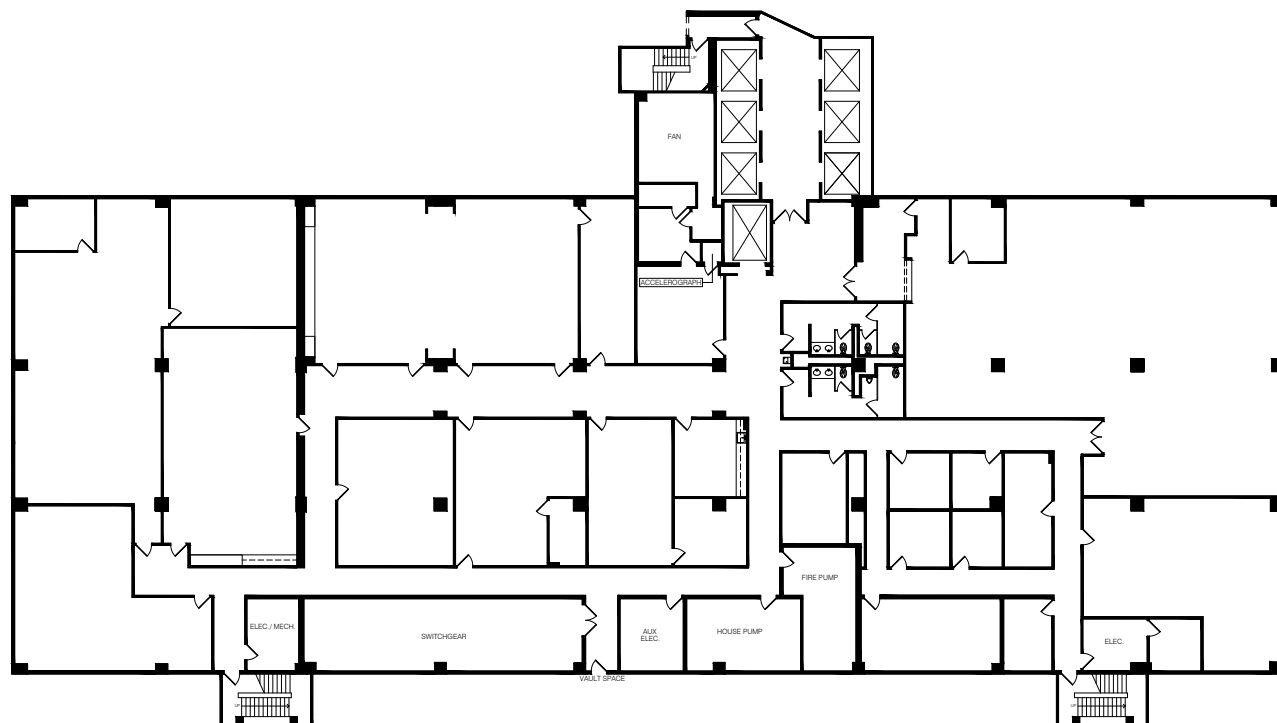
611 NORTH BRAND BLVD
GLENDALE, CALIFORNIA 91203

LOWER LEVEL B

20,626
SQUARE
FEET

\$2.50
RSF/MO
FSG

IDEAL FOR OFFICES USERS, LAB USERS AND STORAGE. AVAILABLE IMMEDIATELY.



onni[®]
group

km Kidder
Mathews

611 BRAND

611 North Brand Blvd
Glendale, California 91203

FOR MORE INFORMATION, PLEASE CONTACT:

BILL BOYD

818.550.8200

bill.boyd@kidder.com

LIC N° 00816177

LINDA LEE

818.550.8200

linda.lee@kidder.com

LIC N° 01278768

SCOTT UNGER

818.550.8200

scott.unger@kidder.com

LIC N° 01855517

KIDDER.COM

This information supplied herein is from sources we deem reliable. It is provided without any representation, warranty, or guarantee, expressed or implied as to its accuracy. Prospective Buyer or Tenant should conduct an independent investigation and verification of all matters deemed to be material, including, but not limited to, statements of income and expenses. Consult your attorney, accountant, or other professional advisor.

